



*A Safe and
Loving Home for
Every Animal*

2019 **IMPACT** REPORT





PATIENCE PAYS OFF

When a dog enters the shelter, we try to gain as much information as we can from their previous situation to aid us in correctly placing the dog in the proper forever home.

When Rainy was surrendered to us, she had escaped her leash multiple times and it was said she only did well with dogs of her size and energy. With that in mind, staff facilitated playgroups with different dogs to evaluate her behavior and establish protocols to set her on a positive training schedule.

Rainy began showing signs of reactivity to strangers and unfamiliar dogs, which were two significant details that helped us further adjust her training. We were able to understand Rainy more and have an idea of what kind of home would match her personality.

Staff never pushed or rushed to place her in a home that wasn't perfect, knowing that with time, the right family would come along.

With dedicated training and enrichment, Rainy found her confidence and began playing with other dogs in supervised play sessions and working on training techniques to combat her stranger reactivity. It wasn't long before the missing piece to Rainy's puzzle clicked and she was going home.

With compassion and patience, each animal that finds its way through our doors leaves through those same doors more resilient, adjusted, and trained to meet their forever family.

Could your dog benefit from a training class? Please click [here](#) to see our offerings!

ON THE COVER: Lenny, a ridiculously adorable beagle mix pup, found his forever family during our National Clear the Shelters event on August 17. He is pictured here mid-snuggle with his new brother. He was the very first dog adoption of the day! For the first time in our shelter's history of participating in this nationwide event, every available dog was adopted.

LETTER FROM LEADERSHIP

As we reflect on 2019, the word that comes to mind is “community”. Our community is defined in many ways. Community is the place that we live and work, it is also the people who support us and those that we serve. Community, in the narrow sense, is the individual animals that we help and in the broader sense, it is every animal that benefits when adopting from a shelter becomes the norm or when a stronger law is passed.

We are so grateful for our community.

Much of the year continued to be focused around caring for the 36 German Shepherds that were being held in protective custody. It was nearly two full years before they won their day in court. But on October 3, 2019, the Shepherds were surrendered by their former owner and we could finally begin preparing them for new forever homes. As these words are written, nearly five full months later, two beautiful Shepherds are still with us awaiting new families. We hope they come soon.

When we reflect on the case of the Shepherds, we can't help but think about our community and the unforgettable generosity that we saw during those long months. We received donations from our local friends and Shepherd and animal lovers from all over the country. Our community came out to volunteer in a huge way: These dogs needed to be walked almost constantly to keep them healthy and stimulated and our volunteers were there. Friends gave food and toys, businesses ran fundraisers and grantors provided ‘Shepherd Tough’ toys and enrichment treats. Seeing animal lovers unite to help save these dogs was a beacon of light during this tough time.

But, when we think about 2019, we also remember that it was a year when NHSPCA Community Programs expanded tremendously and in wonderful ways. Our first [Alzheimer's Café](#) kicked off on Valentine's Day and was held monthly after that. Folks from all over came, either independently or with a care giver, for a chance to stroke a kitten or touch the incredible softness of a chinchilla. Animals sometimes spark a memory long forgotten and it is amazing to see it happen in our classroom with people who need it most. Our community programs expanded in other ways as well. Our [Food Share Safety Net](#) now provides food to nine local food pantries and to Meals on Wheels. We are proud to be able to help those in our community who are struggling to feed their pets. Keeping these families together is a priority for us. Our animal wellness visits to elderly and low-income housing and our reduced fee spay/neuter clinics are a few other ways that we are assisting our community members, both animal and human.

One of the programs of which we are most proud is our [Safe Pet Program](#). For years we have offered emergency animal housing for those attempting to leave an abusive living situation. This year, thanks in part to a grant provided by PetSmart Charities, we have expanded this important safety net to include those who are homeless or have become housing insecure. This program gives people in need a place for their animals to be safe and cared for while they sort things out. The animal's stay may be just a few days or as long as a few weeks, but the goal is always to reunite the animal with the people that love them. Again, keeping people and their animals together whenever possible is a priority.

To be sure, 2019 was all about community. We couldn't place thousands of animals in forever homes, or provide food to animals in need, or offer support to police departments investigating cruelty reports, or educate a single child, without the love and support that every donor, volunteer, staff member and friend has given. We are beyond grateful for each and every one of you. Thank you!

Sincerely,

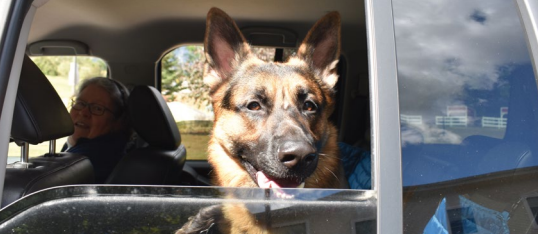


Lisa S. Dennison, Executive Director



Joshua Scott, President





2019

YEAR IN REVIEW

TAILS FROM AROUND THE SHELTER



JANUARY

January opened with a government shutdown and a growing concern in our community for folks facing sudden financial hardship. Our [Food Share Program](#) helps anyone having difficulty feeding their pets. By offering food from our supply, we can help keep pets and people together through tough times.

2019 was a year of landmark legislative issues involving animal welfare. We kicked the season off with a “standing room only” [Legislative Reception](#) which brought together New Hampshire Legislators and community members to hear about proposed animal welfare bills. This was the start of a long battle to strengthen the state’s animal cruelty laws.



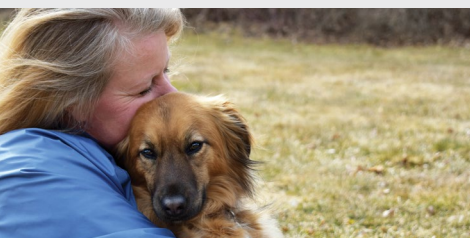
FEBRUARY

Our newest community program was launched! Research indicates that interaction with animals can offer excellent therapeutic results for older adults and those living with Alzheimer’s or dementia. It was touching to witness this firsthand at our [very first Alzheimer’s Café](#) at the New Hampshire SPCA.



MARCH

Starfish Club is a dedicated group of children who meet monthly during the school year to work on animal welfare issues. This year the club focused on rabbits. Many club members had witnessed first-hand how rabbits are not always treated as “first-class” pets like dogs and cats. [House Bill 283](#), was proposed to enforce stricter rules for transferring, adopting or selling rabbits in NH, so the [Starfish Club](#) worked hard to get the word out and urge folks to contact their legislators to support the bill! (Thanks to their advocacy, [House Bill 283](#) would ultimately be signed into law by the Governor.)



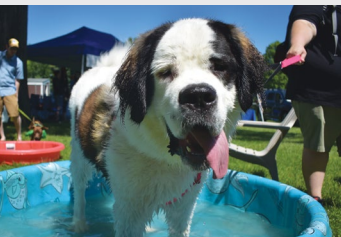
APRIL

We went public with the [Campaign for Changing Times](#), a transformative capital campaign with significant investments in three key areas: Expansion, Enhancement and Endowment. Through this campaign, the New Hampshire SPCA is laying the foundation for compassionate animal care for years to come. Our generous community shared in our excitement for the future, and we entered the new year close to reaching our goal.



MAY

Pippa came to us as a tiny piglet and spent almost a year with us. She’s a Yorkshire Cross, a farm breed that is primarily raised for meat. Staff and volunteers immediately fell in love with her and were fiercely committed to finding her a sanctuary home that would let her live out her life happy and safe from harm. It wasn’t an easy task. She kept growing and growing, to nearly 200 pounds! Our hearts were full as we drove her the six hours to her new home on a farm in New York. **We want to thank all our supporters who made this happy ending possible for a very deserving and much-loved pig!**



JUNE

Paws Walk is the largest, dog-friendliest event on the seacoast and thousands of animal lovers (and their dogs) showed up to help support our work at the shelter. It is a fun event with a serious purpose, to raise critically needed funds to help us care for thousands of homeless animals. It was an extraordinary day. We hope to see you on June 14 for [Paws Walk 2020!](#)



JULY

We are so grateful that our community has a soft spot for senior animals. The story of Lola, an elderly pug who lost the only home she ever knew when her owner passed away, touched the hearts of many of our social media followers. We couldn't have found Lola a home as quickly as we did without your help!



AUGUST

We cleared the shelter! For the first time in our history — every available dog at our annual Clear the Shelters event found a home. Thanks in large part to some terrific media coverage by NECN and NBC Boston, adopters were lined up early to give a homeless animal a second chance!



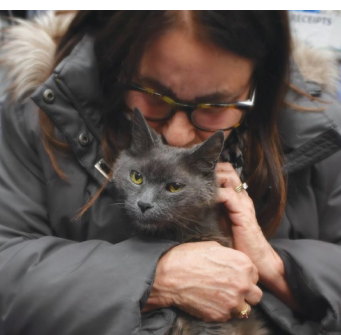
SEPTEMBER

Often when people are going through difficult, life changing circumstances, it is their pet that gives them some sense of purpose and reason to hold on. Thanks to a grant from PetSmart Charities, we've expanded our [Safe Pet Program](#) to provide emergency/temporary boarding of pets for families in crisis. By being able to help people to keep their pet safe while they sort through their difficult circumstances, we can avoid surrender and reunite pets with the family that already loves them!



OCTOBER

The most emotionally and financially draining cruelty case in our history was finally decided. After nearly two years in court ordered protective custody, the 28 [German Shepherds](#) that were rescued from a frigid barn in January of 2018 were legally released for adoption. By the new year, all but two were placed in loving forever homes.



NOVEMBER

Princess Tigger was brought to us when her owner passed away. Initially we guessed this beautiful cat to be around 17 years of age, but when verifying her micro-chip we discovered that Princess was nearly 21 years old! This was, by far, the oldest kitty we've ever had available for adoption. Senior cats in the shelter environment are more susceptible to illness, so we knew we needed to find her a home fast. We turned to our followers on Facebook and Instagram for help and her story quickly went "viral". She was adopted within 24 hours! For the staff and volunteers that remember when it was impossible for us to place cats older than eight years old — this moment was extraordinary.



DECEMBER

Winter is here and we see a sharp influx of horses and farm animals in need of help. As one of the few animal shelters in the state committed to helping horses and farm animals, we take call after call regarding animals in dire need of food, medical care and safe shelter. Spicy is just one of the 118 horses and farm animals that were in our care in 2019. She hadn't been let out of her filthy stall for well over a year, forced to stand in her own waste on painfully overgrown hooves. While this picture is heartbreaking — it marks an important turning point in her life. She will never be treated so cruelly again. Thanks to your support, she is safe, and our staff and volunteers are working together to give her the very best care.

ADOPTION CENTER

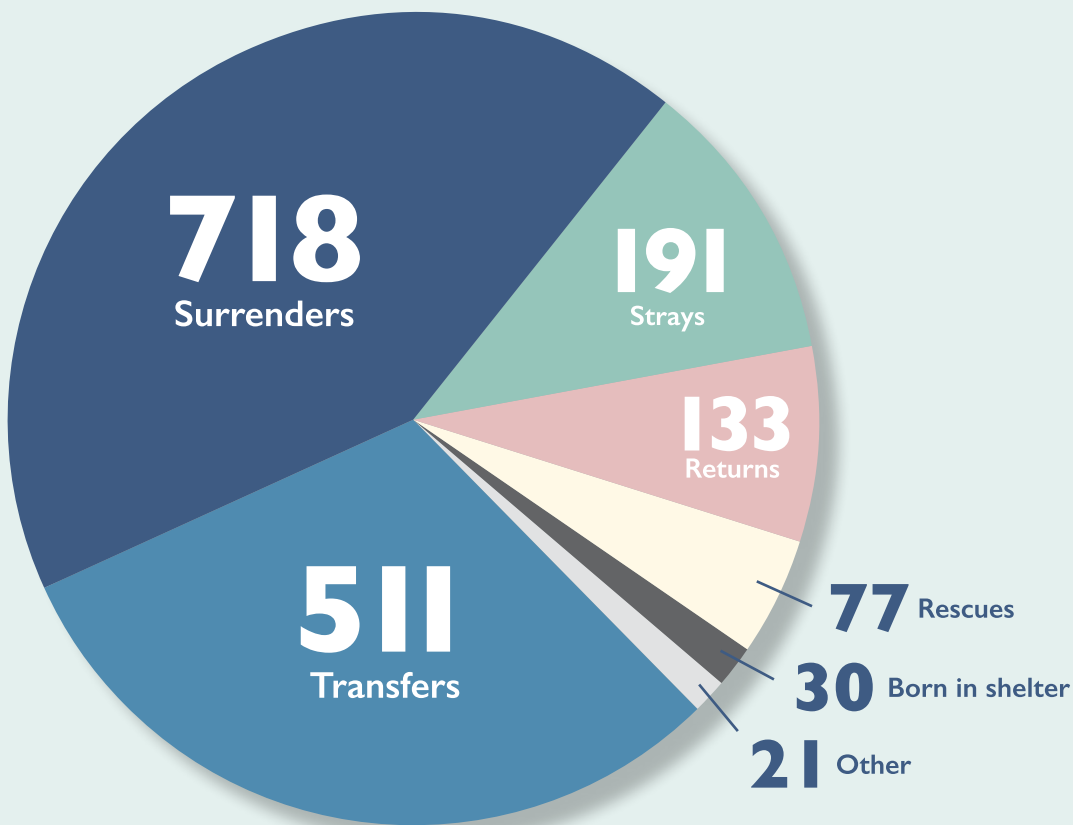
INCOMING ANIMALS IN 2019: 1,681

163

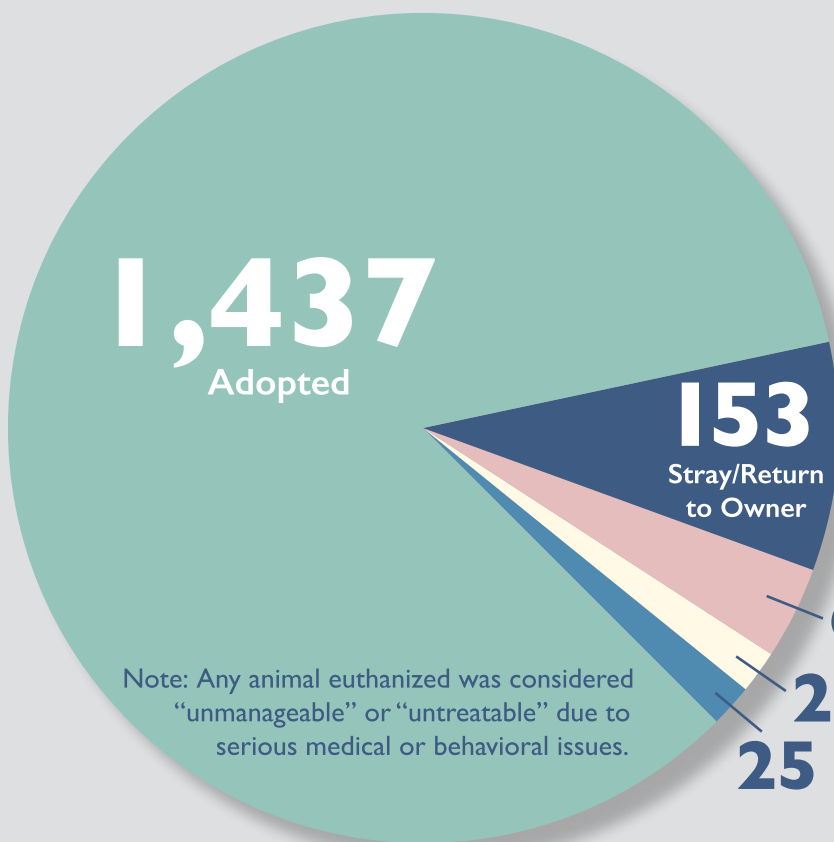
Animals already in our care at the start of 2019

67

Animals held in protective custody during 2019



OUTGOING ANIMALS IN 2019: 1,706



Note: Any animal euthanized was considered "unmanageable" or "untreatable" due to serious medical or behavioral issues.



placement rate of healthy animals



placement rate of treatable/rehabilitatable animals



live release rate

138

Animals remaining in our care at the end of 2019

ADOPTION CENTER

2019

IMPACT REPORT

SHELTER ANIMAL MEDICAL CARE



1,844

Animals receiving health checks



642

Spay & neuter surgeries



607

Rabies vaccinations administered



520

Microchips administered



28

Other surgical procedures



14

Horses receiving intensive medical care



[Click here to help save lives!](#)

SHELTER ANIMAL LENGTH OF STAY

The *average length of stay* is the time animals spend at the shelter from the moment they are brought in until they are adopted. This includes animals that require medical attention upon arrival and all protective custody cases. The *median length of stay* represents how many days animals spend at the shelter from the time they are made available for adoption until they are adopted.

ANIMAL	IN OUR CARE	ADOPTED	RETURN TO OWNER	AVERAGE LOS	MEDIAN LOS
Cats	492	448	37	20	10
Dogs	371	233	98	65	8
Kittens	378	313	1	19	10
Rodents	152	97	0	45	22
Guinea Pigs	99	85	0	19	11
Birds/Other	94	59	8	63	13
Farm Animals	80	67	2	67	58
Puppies	71	57	2	10	7
Rabbits	69	56	4	44	19
Horses	38	22	1	295	222
Total	1,844	1,437	153		

Please note: These stats include the 1,681 animals that turned to us in 2019 and the 163 already in our care on January 1, 2019.



SAFE PET PROGRAM

At the New Hampshire SPCA, we are grateful to be able to offer different programs that benefit our community. From our Community Wellness Clinics, Low Cost Spay and Neuter, and Food Share Program, there are many ways we provide support for those in need; animals and people.

One of those programs, Safe Pet, is one you may not have heard about.

This long-standing program, active for more than 25 years, provides victims of domestic violence free housing for their pets for two weeks. If needed, this can be extended until the individual has resettled. This program, like many others, can be a life-saving resource in a time of need.

We are so excited to share that this year, thanks to a grant from PetSmart Charities, we were able to expand this program and can now offer assistance to those dealing with home insecurity and homelessness.

We are so grateful to be able to offer services to more people and pets in crisis.

We care for these animals as we would any other: we provide a warm bed, nutritious meals, and a safe place to stay while their owner finds a safe place of their own. We're no stranger to the threat a domestic violence and homelessness poses to pets; offering this program keeps animals safe and families together.

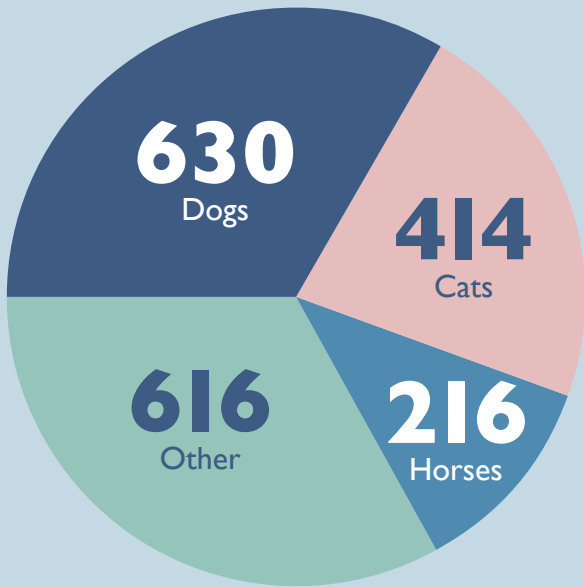
Would you like to help support our community programs? Please click [here](#) to donate today!

FIELD SERVICES DEPARTMENT

653

cruelty complaints received & investigated

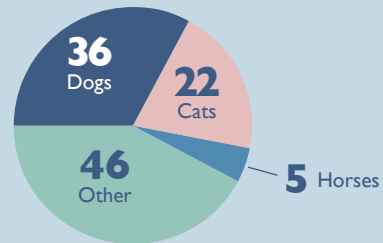
1,876 animals involved in complaints investigated:



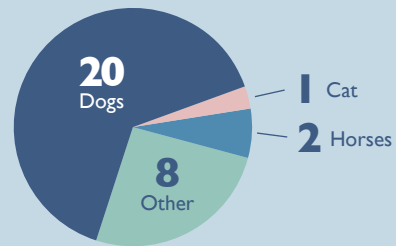
140

animals seized/surrendered following investigations

109 animals surrendered:



31 animals seized:



COMMUNITY WELLNESS CLINICS



269

Low cost spay & neuter surgeries



147

Rabies vaccinations administered



90

Distemper vaccinations administered



52

Microchips implanted



24

Additional medications administered



19

Flea & tick preventative applications

BEHAVIOR & TRAINING DEPARTMENT

664 Total training class participants

491 Puppy/Small Dog Drop-In class participants

167 Workshop participants

134 Training classes offered

119 Private consultations

67 New Adopter class participants

13 Workshops offered

13 Behavior plans written for severely behaviorally-challenging dogs



DECK THE HOWLS

To celebrate the holiday season, the New Hampshire SPCA hosted its first-ever Deck the Howls, which is an event held in shelters all around the country. Registration opened and within one day, the event was sold out!

The evening came and children ages 5-12 years old started arriving dressed in their pajamas, holiday books in hand. Soon, the classroom was scattered with sprinkles and holiday cookies, and laughter could be heard from the building next door.

As the Adoption Center lobby began to fill with visitors looking at adoptable animals, they were greeted by those same children reading to the animals. You could walk by any kennel and see a child calmly reading to an animal who appeared to be intently listening to the story.

It's a special thing to watch the relationship between children and animals. Reading to animals is an incredibly therapeutic activity as an animal will never judge or correct, they will simply listen. That's why so many of the Humane Education programs include it in their schedule.

After storytime was over, the night ended with hot chocolate and cookies. It was a wonderful evening full of holiday joy and we are already excited for next year!

Would your child like to get involved at the NHSPCA? Please click [here](#) to see our programs!

HUMANE EDUCATION DEPARTMENT



2,268

STORYTIME WITH THE ANIMALS PARTICIPANTS

AGES 2-5

[LEARN MORE](#)



780

BIRTHDAY PARTY PARTICIPANTS

[LEARN MORE](#)



205

SUMMER CAMPERS

AGES 6-15

[LEARN MORE](#)



200

JUNIOR VOLUNTEERS

AGES 13-15

[LEARN MORE](#)



6,796

CHILDREN RECEIVING EDUCATION THROUGH THE NHSPCA



34

CLUB MEMBERS

AGES 6-13

[LEARN MORE](#)



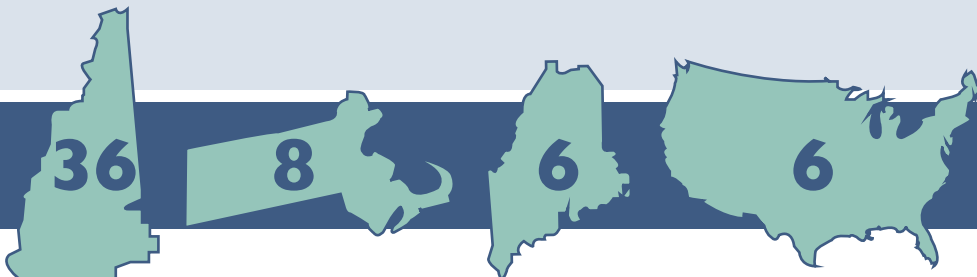
1,634 STUDENTS ATTENDED A PRESENTATION

575 STUDENTS RECEIVED A TOUR

550 CHILDREN ATTENDED AN OFFSITE EVENT

550 CHILDREN ATTENDED A CLASSROOM EVENT

56 COMMUNITIES REACHED





ENHANCING ENRICHMENT

Imagine spending your days in a kennel. A space big enough for a bed, food, water, toys, but not enough to run and play. That was the reality of the 36 German Shepherds that were in our care for almost two years. This incredibly motivated, high-energy breed was subjected to months that turned into years of waiting.

Our staff and volunteers wanted to figure out different ways to keep them engaged and happy. Our staff worked tirelessly to develop ways to execute this difficult task — including everything from frozen treats, calming music, a rotating schedule of scent diffusers and individualized playtime. Once the plan was determined, our volunteers stepped up in a very big way, jumping at the opportunity to put in the extra hours, miles and snuggles without so much as a question. Our regular dog walking volunteers became Shepherd extraordinaires and came to understand each dog inside and out.

Pack walks became a much-anticipated part of the new weekly routine. Volunteers and staff would take a few Shepherds offsite for extended walks in the woods twice a week. This allowed dogs who would normally be walking alone to get the critical socialization and exercise they needed. An endeavor like this would have likely remained a dream had we not had the help of our volunteers.

We're grateful for the dedicated group of volunteers that took the time to ensure that each Shepherd had the most positive shelter experience possible. Each dog is better for having known the love of our volunteers.

Interested in becoming a volunteer? Please click [here](#) for more information!

VOLUNTEER PROGRAM



FOSTER CARE



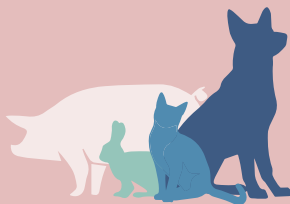
39,377

Hours

88

Volunteers

DIRECT ANIMAL CARE



19,847

Hours

383

Volunteers

GENERAL SHELTER SUPPORT



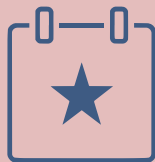
3,953

Hours

133

Volunteers

OUTREACH & DEVELOPMENT



2,515

Hours

177

Volunteers

HUMANE EDUCATION



169

Hours

7

Volunteers

BOARD MEMBERS



578

Hours

13

Volunteers

66,439 HOURS BY 649 UNIQUE VOLUNTEERS

1872 SOCIETY

The 1872 Society was developed as a way of recognizing and thanking our incredibly generous donors who are so important to the animals and our mission. The category names were chosen to further demonstrate that each plays a significant role. We sincerely appreciate each one of you for your commitment to our work.

HERO — \$10,000+

Anonymous	Mr. John Holland	Mr. and Mrs. Robert Span
Dr. Peter A. Gray	Ms. Josephine A. Lamprey	Tito's Handmade Vodka
Mr. Thomas W. Haas and Ms. Karen Grover	McGovern Subaru	Mrs. Karen Walsh
Knopf Family Foundation	PetSmart Charities	Ms. Sharon Wehrle

GUARDIAN — \$5,000+

Adella and Alfred Giller Charitable Trust	Mr. and Mrs. James E. Lawson
Mrs. Lynne A. and Mr. Stephen D. Bottomley	Ms. Ingeborg Lock
Connie and Jim Boyle	Mrs. Paula D. Merritt
Mr. John Burke	Mr. Raymond Miller, Jr. and Ms. Judy Day
Dan Brown Charitable Foundation of the New Hampshire Charitable Foundation	Mr. Keith O'Connor
Ann and William Duschatko	Ms. Joyce M. Pitman
Give With Liberty	Mr. Stephen and Mrs. Stephanie Roach
Mr. and Mrs. Guillermo Larrea	Subaru of New England Inc.

ALLY — \$2,500+

Mr. Curtis B. Allen, Jr.	Diane and Tom Manson
Ms. Melissa A. Benson	Mr. and Mrs. Mark McCaddin
Diane and F. Gordon Bitter	Mr. Edward J. Mehigen
Dr. Alison Cassotis and Dr. Nick Cassotis	Ms. Mary Jean Moltenbrey
Nick Diana	Ms. Janet Peters
Mr. and Mrs. Frank A. Furdyna	Ms. Lisa Phelan
Gemini Electric Inc.	Mr. Jeffrey T. Photiades
Mr. and Mrs. Robert W. Hansen	Portsmouth Ford
History Article Fund	Mr. Robert Schoenberger and Mrs. Schoenberger
Insperty	Mr. J. Kurt Schumacher
Kenneth W. Prodo Revocable Trust of 2007	Mrs. Evelyn C. Schwager
Ms. Victoria S. Kolenda	Bob and Mary Jane Solomon
Mr. Peter Lennon and Ms. Susan Y. Desjardins	Ms. Nancy E. Sullivan
Mr. Bruce L. Macintyre	Mr. Wallace Wilson

While the 1872 Society recognizes our top donors, we would like to express our gratitude to every person who contributes. Each gift has a positive impact and helps care for the animals. Thank you!



1872 SOCIETY

ADVOCATE — \$1,000+

Anonymous	Dr. and Mrs. Richard Duffy	Ms. Linda T. Larson	Mrs. Stephanie Roach
Mr. Robert Abel	Ms. Maureen Dunn-Click	Lori and Jim Lerner	Mr. and Mr. John J. Roes
Mr. and Mrs. David S. Allen	Ms. Karen Edwards	Mr. and Mrs. David Linden	Ms. Mary J. Romano
Allen Wayside Furniture	Mrs. Darlene Ellis	Mr. Jon D. Lindy	Mr. James R. Rosencrantz, Jr.
Amazon Smile Foundation	Michael and Penny Ennabe	Ms. Patricia Lomando	Mr. and Mrs. John J. Ruby, Jr.
Ms. Crystell Anthony	Mrs. Nancy M. Ethier	Mr. William J. Loomis	Ms. Julee Sanderson
Anvil International Inc.	ExxonMobil Foundation	Gene and Tracey Lyras	Mr. and Mrs. John Sarno
Mr. and Mrs. Wildolfo Arvelo	Ms. Ann Federici	Dr. and Mrs. John MacGregor	Mr. and Mrs. Jeff Saunders
Dorothy Baker	Mr. Tom Feid	Mr. Roderic D. Mackay	Mr. Douglas V. Schumann
Bank of America Charitable Foundation	Katherine and Joseph Fellows	Ms. Rose Beth Mandelbaum	Mr. Jared M. Sheehan and Mrs. Heather L. Sheehan
Ms. Elizabeth Bantle	Mr. George E. Fidler and Mrs. Teresa Fidler	Mrs. Sheila Marshall	Mr. and Mrs. Robert A. Sivret
Mr. and Mrs. Albert Barbour	Ms. Carol K. Finn	Donna Martin	Sgt. and Mrs. Michael Sloane
Ms. Susan S. Barrie	Ms. Ifen C. Foster	Dr. and Mrs. Domenic Martinello	Kim Smith
Ms. Betty Fay Benjamin	Ms. Susan Frantz	George and Nan Mathey	Mr. Barry W. Spracklin
Kathy and Steve Biedenbach	Kim and Josef Gazzola	Ms. Monica McCarthy	Mr. and Mrs. Arthur G. St. John
Mr. Stanley Bonis and Ms. Nancy A. Miller	Mrs. Alberta L. Gigliotti	Jane L. McCullough	Ms. Barbara Stirk
Dr. Donald F. Booth	Great Bay Animal Hospital	Ms. Melanie F. McGuire	Mrs. Karen Swistak
Michael Bradley	Great Bay Kennel	Mr. James T. McKenna, Jr.	The Friedman Family Foundation
Dr. and Mrs. Bryan C. Bridges	Mr. Alan Grossberg	Mr. and Mrs. John McMahon	The James H. Wurz Jr. and Edward T. Wurz Sr. Foundation
Mr. James D. Brown	Ms. Megan Guberski	Ms. Nicole D. McMillan	Jonathan and Susan Trace
Ms. Karen Brownell	Mr. and Mrs. Mitch Hankin	Mark and Diana McNabb	Mr. and Mrs. Joseph Tucker
L. Buckley	Mr. Edmund R. Hannon	Ms. Carol McNeil	Ms. Linda Tyring and Ms. Brenda Pegerson
Mr. and Mrs. Jason S. Chaplin	Mrs. Geri Hart and Mr. Robert C. Hart	Kevin McSheehan	Mr. Richard and Mrs. Joan VanLandingham
Mr. and Mrs. David Choate	Mr. and Mrs. William L. Hart	MISSION Portsmouth	Mr. Charles and Mrs. Lynne Walker
Ms. Ruth Christopher	Lisa Henry	Mr. and Mrs. Kenneth F. Mitchell	Mr. Michael Watman
Mr. Philip E. Comstock Jr.	Ms. Deborah Holbrook	Vance and Anne Morgan	Mr. and Mrs. Frederick W. Welch
ConvenientMD LLC	Ellen Hoyt	Ms. Cheryl Morin	Mrs. Cathy Wells
Julienne Conway	Ms. Julie Hunt	Mr. James Mulroy	Mr. and Mrs. Carden Welsh
Mr. and Mrs. Weston F. Cook Jr.	Mr. and Mrs. James J. Hurley III	Tish and Jim Munton	Mr. and Mrs. Erik Wheeler
Mr. Richard H. Cooper	Mr. and Mrs. Manley R. Irwin	Ms. Charlotte T. Nadeau	Ms. Susan G. Wildes
CoreMedical Group	Mr. and Mrs. Stephen B. Jones	Mr. Thomas Nash	William Dean Trust
Cornell University	Mr. and Mrs. Stephen B. Jones	Mrs. Donna Newman	Ms. CherylAnne Williams
Mr. and Mrs. Edward Crane	Catherine Judd	Ms. Cynthia Noone	Alex Wilson
Mrs. Brenda Crawford	K and K Moody Fund	Ms. Donna Novelli, Ph.D.	Dr. Peter Winkler and Dr. Dalma Winkler
Mr. James Dan	Ms. Suzanne Kasprzak	Ocean State Job Lot	Mr. Troy Witham
Ms. Kirstin M. Davis	Mrs. Judith Keaney	Ms. Diana Parker	Claudia D. Witham
Dr. Patricia A. Day-Lollini and Lance O. Lollini	Ms. Victoria Keir	Pease Memorial Tournament Fund	Ms. Mara R. Witzling
Mr. Richard Desmarais and Mrs. Trudy Desmarais	Mr. George M. Kester	Ms. Victoria Petrigni	Owen Wolfertz
Kathleen Desrosiers	Mr. Edward Kohlhasse Jr.	Ellyn and Greg Phelps	Joe and Marbet Wolfson
Ms. Marisa Diberardinis	Mr. and Mrs. Denis T. Kokernak	Gloria and John Pirozzi	Yankee Pine Corporation
Dunkin'	Mr. and Ms. Charles Kraus	Chris and Alison Pyott	ZehnTek
	Ms. Gayle Lamm	Ms. Mary B. Quandt	
	Ann and Michael Lane	Mr. and Mrs. Paul Raymond	
	Ms. Judith M. LaRosa	Mr. and Mrs. Lance Ribeiro	

Interested in joining the 1872 Society? Please click [here](#) for more information!



MORE THAN JUST CATS & DOGS

Genevieve arrived at the shelter in late February and it didn't take long for her to settle in. She befriended the other animals in her enclosure and became the highlight for visitors walking by.

Not long after Genevieve arrived, her forever family came to visit and just had to take her home to their local farm. Genevieve has adjusted quickly, learning when breakfast and dinner times are by recognizing all the sounds associated meal prep, and eagerly marching in the parade as bowls are distributed. She has acclimated to the chickens and barn cats running around and watches them curiously.

While she hasn't quite warmed up to the idea of a wading pool, she will cautiously observe her herd mates splashing around.

Genevieve's family has sent many updates to the staff and volunteers who cared for her while she was with us and the love they have for her flows on the page.

It's incredibly comforting and satisfying for those who care for the animals to see them flourish and blossom in their new homes; to see how far they've come since they arrived. Genevieve looks pretty happy as you can see from the picture above, and we're incredibly grateful for her family for giving her the home she deserves.

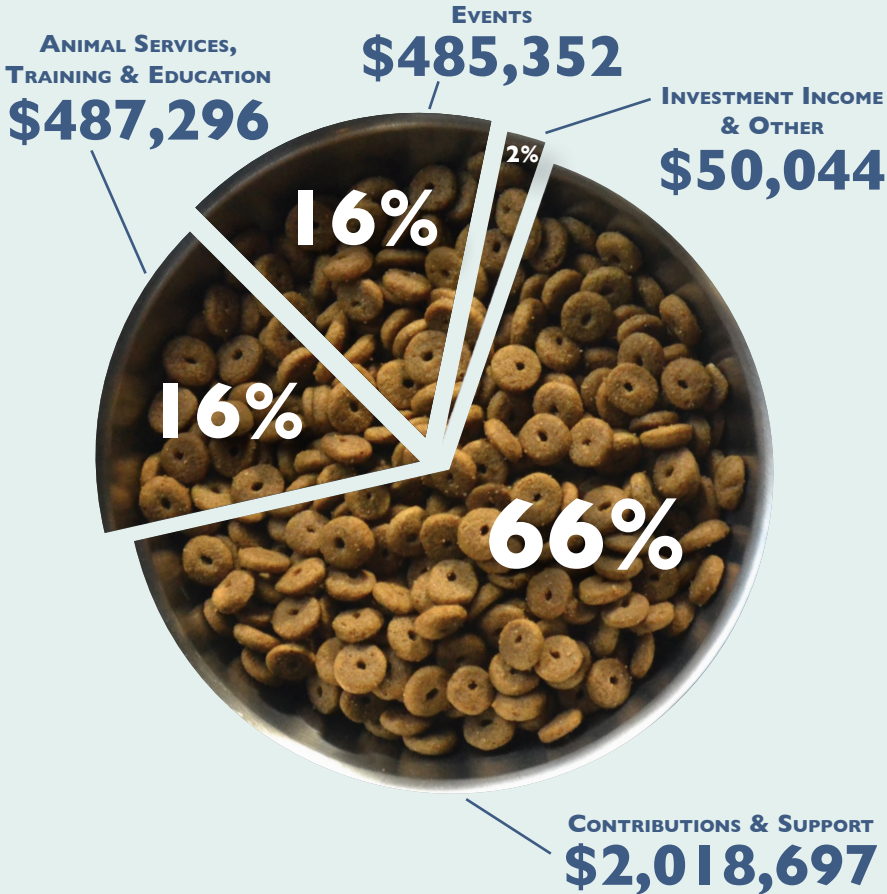
Looking to add a farm animal to your barnyard? Please click [here](#) to view our available animals!

2019 FINANCIAL SUMMARY

2019

IMPACT REPORT

OPERATING INCOME



A HEALTHY COMMITMENT

Average investments we make in every cat and dog:

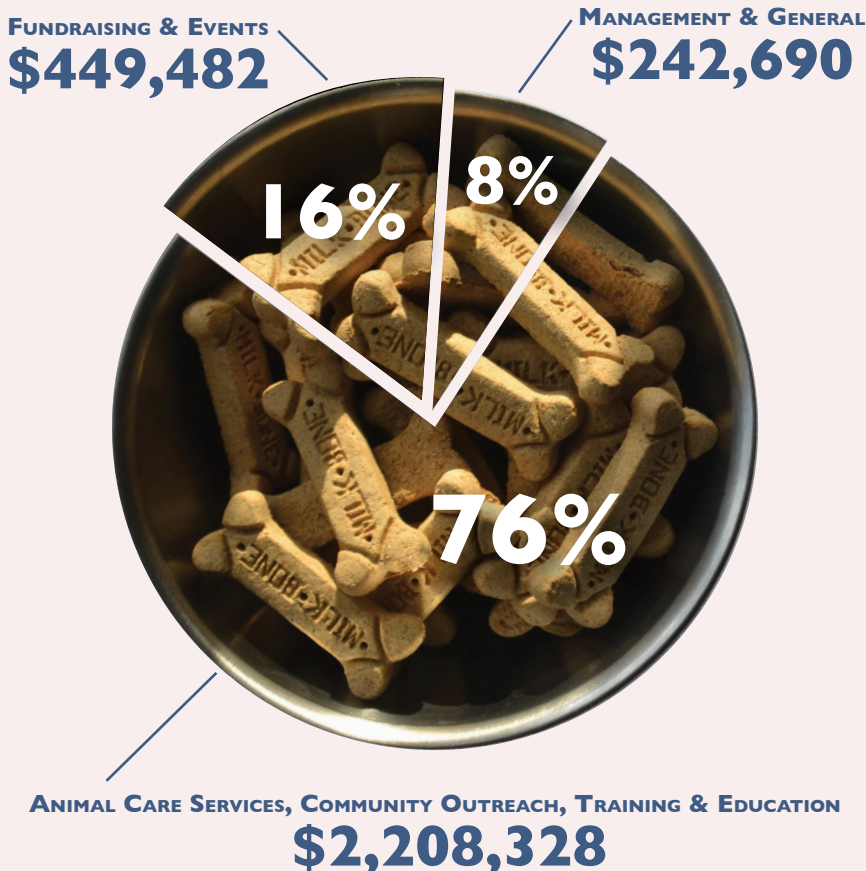
Service	Approx. Value
Dental	\$250 (When applicable)
Food & care for at least 14 days	\$210
Spay/Neuter	\$125-350
Other procedures/surgeries	\$100-2,500 (As needed)
Time with Behavior Trainer	\$100 (5 hour average - dogs)
Diagnostic	\$75
Microchip implant & registration	\$50
Updated vaccinations	\$50
Heartworm test & preventative	\$35 (Dogs)
Flea & parasite prevention	\$35
Vet exam	\$35
Collar/leash or carrier	\$24
Identification tag	\$6

Average committed to every cat and dog

\$620-\$3,720

NOTE: We are equally committed to other animals in our care. Approximate value of services that other animals receive would vary by species.

OPERATING EXPENSES



A pup recovers from her spay surgery before being made available for adoption.

THE CAMPAIGN FOR CHANGING TIMES



The needs of our animals and our community are ever changing. In order to advance our vision of “A Safe and Loving Home for Every Animal”, the NHSPCA must respond to these changing times. The demand for the NHSPCA’s services, programs, and support for animals both in our care and in our community is increasing. Some of the current day challenges include:

- Increased surrender of equine and farm animals due to limited options statewide
- Escalating cost of veterinary care for owned animals causing needless animal surrender
- Demand for multi-purpose space for educational/ social service programs
- Greater demand for adoptable animals
- Prolonged animal stays due to behavior or health issues
- An aging facility with systems approaching end of life

To continue our mission of saving lives, educating the next generation, building the human/animal bond and preventing animal cruelty, **we must act now**. The NHSPCA must be prepared to respond to the animals and people who need us today, and in the future.

The Campaign for Changing Times will enable the NHSPCA to meet and exceed these challenges by significant investments in three key areas:

Expansion

Land Acquisition, Arena & Training Space: The acquisition and development of two land parcels adjacent to our existing property will allow us to expand equine and farm animal rescue and provide critically needed year-round training and rehabilitation for horses. With this expansion, we have gone from **6 acres to 15 acres**, and our plans include building an indoor horse arena and additional equine housing and turn-outs. The arena will provide appropriate and safe space for staff to evaluate, rehabilitate, and train horses year-round, increasing adoptability. The arena will provide additional space for community members to surrender their farm animals due



The enhanced facility will include improved housing, community medical clinic, flexible quarantine space and a multi-purpose room.

to health, family, or financial crises before they become victims of neglect. By establishing this higher standard of care, we expect to see far shorter average lengths-of-stay among horses and farm animals.

The expansion will also enable us to create enhanced dog training and exercise spaces. These spaces will allow staff and volunteers to instruct, stimulate, and socialize dogs that enter our facility, benefiting both the animal and their future families. We will have new fenced in areas that will serve the public’s expressed need for additional training programs focusing on the relationship between the dog and its person. We will also have new wooded dog walking trails — away from cars, people, and other animals. These trails provide a tranquil, diverse, and inviting space for the animals in our care, especially those that are fearful or with us for extended periods of time.

Enhancement of our Adoption and Learning Center

Our existing space is inadequate to meet the changing needs of animals and our community. To meet those needs, we are planning to remodel our existing space to allow for the following improvements:

A Community Medical Clinic. This low-cost, public-facing clinic will not only provide care for all the shelter animals but will also provide the opportunity to offer low-cost veterinary services to our community. While we currently offer rabies and spay/neuter clinics, we have only been able to provide support for cats due to lack of space. This newly designed clinic space will be more accessible to the general public and will allow us to expand our offering of affordable wellness care to both cat and dog owners. We have historically seen the cost of caring for an animal as one of the top three reasons for surrender. It is our hope to reduce the number of people forced to make this sad decision and keep more animals in their homes.

Improved Animal Housing. Providing larger, appropriate cages and kennels that align with the new industry standards will reduce stress, improve overall health and increase animals' comfort. This is more important than ever due to the increased numbers of animals receiving long term medical care and remaining in the shelter during treatment.

Flexible Quarantine Space. Relocating animals from overcrowded shelters literally saves their lives. Once here, they find their second chance. In order to respond to transport and medical protocols, including specific quarantine requirements, and prepare for ever-changing incoming populations we must have flexible space to allow us to adapt. By reconfiguring our quarantine and kennel space, we increase the ability to bring in more transports of animals, while remaining compliant with health protocols.

New Education/Multi-Purpose Room. Our Humane Education programs serve thousands of children each year, with more on our waiting list. Our existing classroom is constantly in use and is designed for use by small children. Having a new multi-purpose room will allow us to provide additional programming for children, but also expand for people of all ages and abilities. This new flexible education space will serve as a classroom, a teen camp, and a space for social service programs that foster bonds between animals and humans, and so much more.

Replacement of System Mechanicals. Our buildings are now between 16-20 years old and with time we have experienced inefficiencies and critical systems that have failed or are near to end of life. These essential systems include HVAC, septic, roofing, and energy generation. These renovations will provide improved functionality, ability to reduce our environmental impact, and reduction of our utility costs.

Ways to Learn More

For additional details, conceptual drawings, campaign videos and more, please click [here](#).

Questions? Contact...

Lisa Dennison or Sheila Ryan
(603) 772-2921 ext. 107 or ext. 106

Campaign Co-Chairs



Josephine Lamprey



Karen Grover

Campaign Co-chairs Jo and Karen have worked tirelessly to make this vision a reality. We are truly grateful to them and the amazing Campaign Committee they've led.

The long-term impact of these improvements will allow us to allocate more of your precious donated dollars directly into the support of animals, and will fulfill the operational needs of our staff, our animals, our volunteers, and our community.

Endowment: A Sustainable Future

The NHSPCA relies on private contributions to save animals' lives. **We are an independent organization and have no financial relationship with the ASPCA or other national organizations and receive no governmental funding.**

With the need for additional space, more animals to care for, and rising costs of care, our annual expenses are expected to increase. To create greater financial security for the future, we must develop a reliable income stream in addition to our annual community fundraising. Increasing the investment in our endowment will provide a more predictable income to support core programs like cruelty investigation and intervention, humane education, and high-quality animal care. Establishing a strong endowment will help ensure the NHSPCA is here to provide for animals for future generations.

While our plans are ambitious, our community and its animals deserve nothing less. Through the successful completion of this transformative campaign and with the help of donors like you, we will be laying the foundation for new and compassionate animal care for the next 20+ years.

2019 **IMPACT** REPORT

VISION

A Safe and Loving Home for Every Animal

MISSION

To save the lives of companion animals through rescue, rehabilitation, and adoption; to promote learning, eliminate animal cruelty and be a leader in advancing the highest standards of animal welfare.

GUIDING PRINCIPLES

Our Guiding Principles direct us to act in the best interest of the animals and to strengthen the human-animal bond by:

- advocating for stronger laws, enforcement and compassionate treatment of animals by being a voice for the voiceless
- remaining committed to an open admission and unlimited stay policy for companion animals
- providing individualized care for each animal to meet its specific needs
- ensuring that we are the first choice for the adoption of healthy rescued animals
- providing learning, educational and volunteer opportunities for all ages
- serving as a resource and continuing to meet community needs
- extending ourselves to further our mission
- acting in an ethical, professional, and compassionate manner
- stewarding donor resources responsibly as a non-profit 501(c)(3) organization that depends on private donations and fees for services



104 Portsmouth Ave., PO Box 196
Stratham, New Hampshire 03885
(603) 772-2921 • nhspca.org